

Carved tea curio chest rests against background of handpainted mural.

the walls have eyes

Almost every wall comes to life as the result of a home improvement program completed by Mr. and Mrs. Don Correira, 4059 29th Ave. N., where the fine lines and detailed craftsmanship of Oriental furniture blend with the elegance of handpainted murals.

The Correiras, faced with a need for more living area, searched long for a house to replace their two-bedroom, one bath residence. Finally they decided to remodel rather than move.

Correira designed the expansion program, making use of existing walls but putting existing areas to better use.

Their garage became the master bedroom. A long patio area behind the garage was enclosed for dining, kitchen and utility room. The original kitchen became an "L" of the living room for a music and television area and Florida room, and a screened porch was added at the rear of the house.

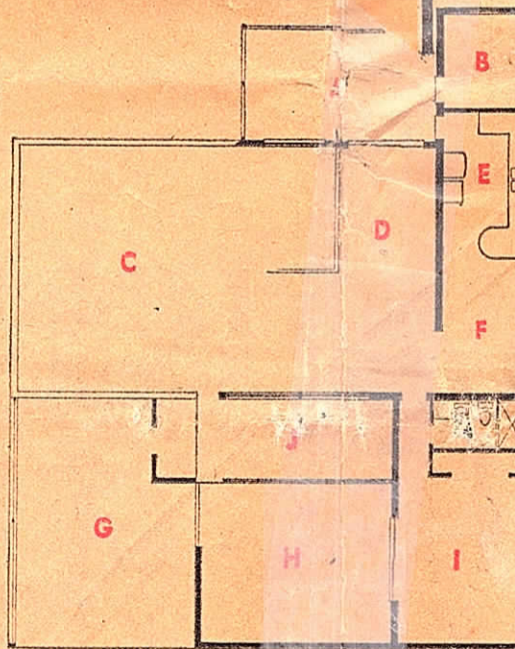
The original two bedrooms and bath, with the adjacent new screened porch, now is the wing for the children, Lisa Louise, 14 months; Debra Gayle, 4; Elena, 5, and William, 10.

The changes to the house have added 880 square feet of living area and increased the total living area from 1320 square feet to 2,210.

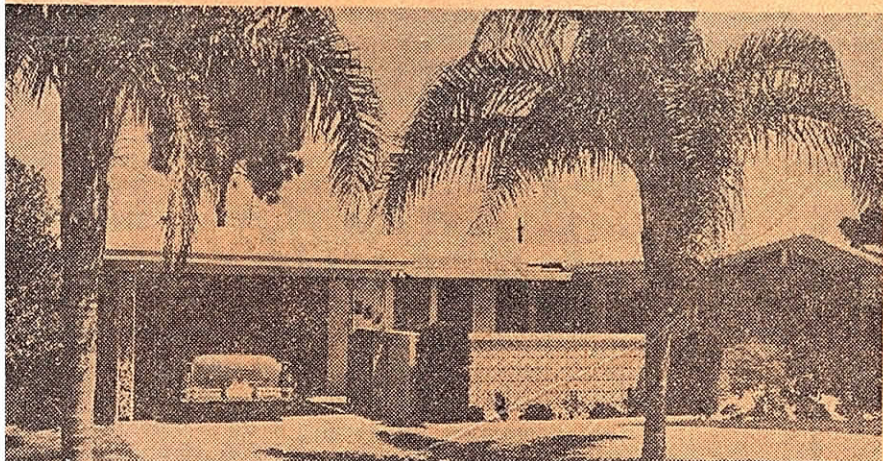
Correira, an electronics technician at Minneapolis-Honeywell, related that because of the family expansion, they needed a larger kitchen, the extra bath and bedroom. (Mrs. Correira hastily added: "Besides, he always wanted to try his hand at house designing.")

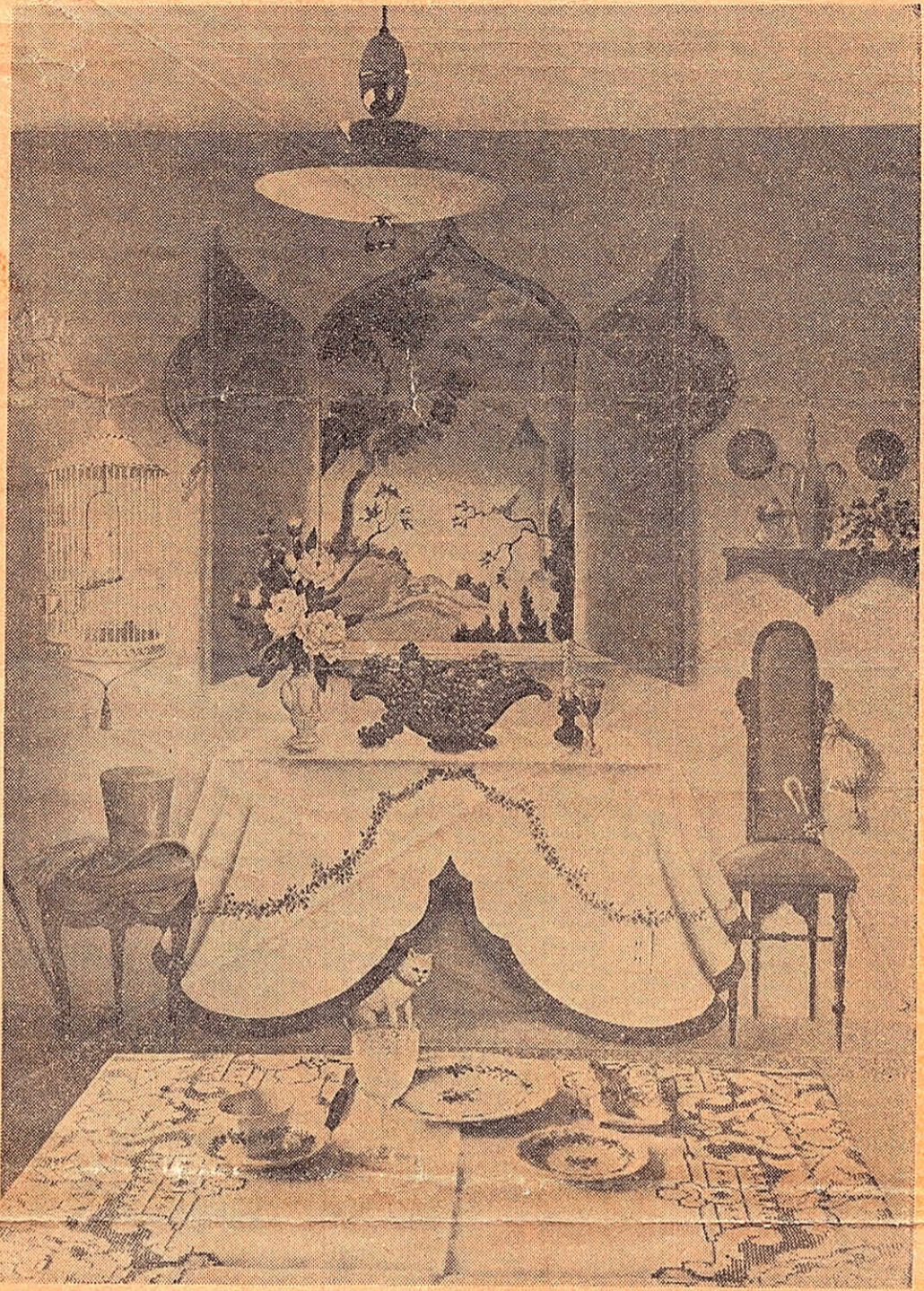
The young couple also installed a circular drive and carport with storage area to replace the garage and the space in the ga-

(See WALLS, Page 10-G)

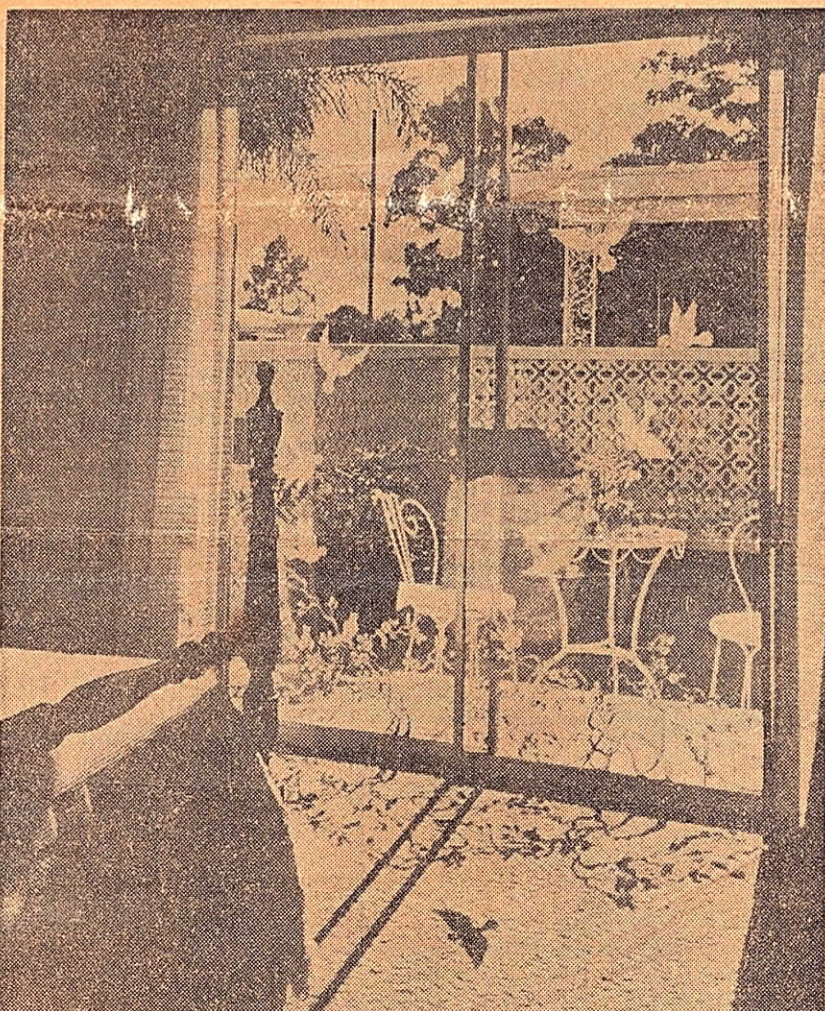


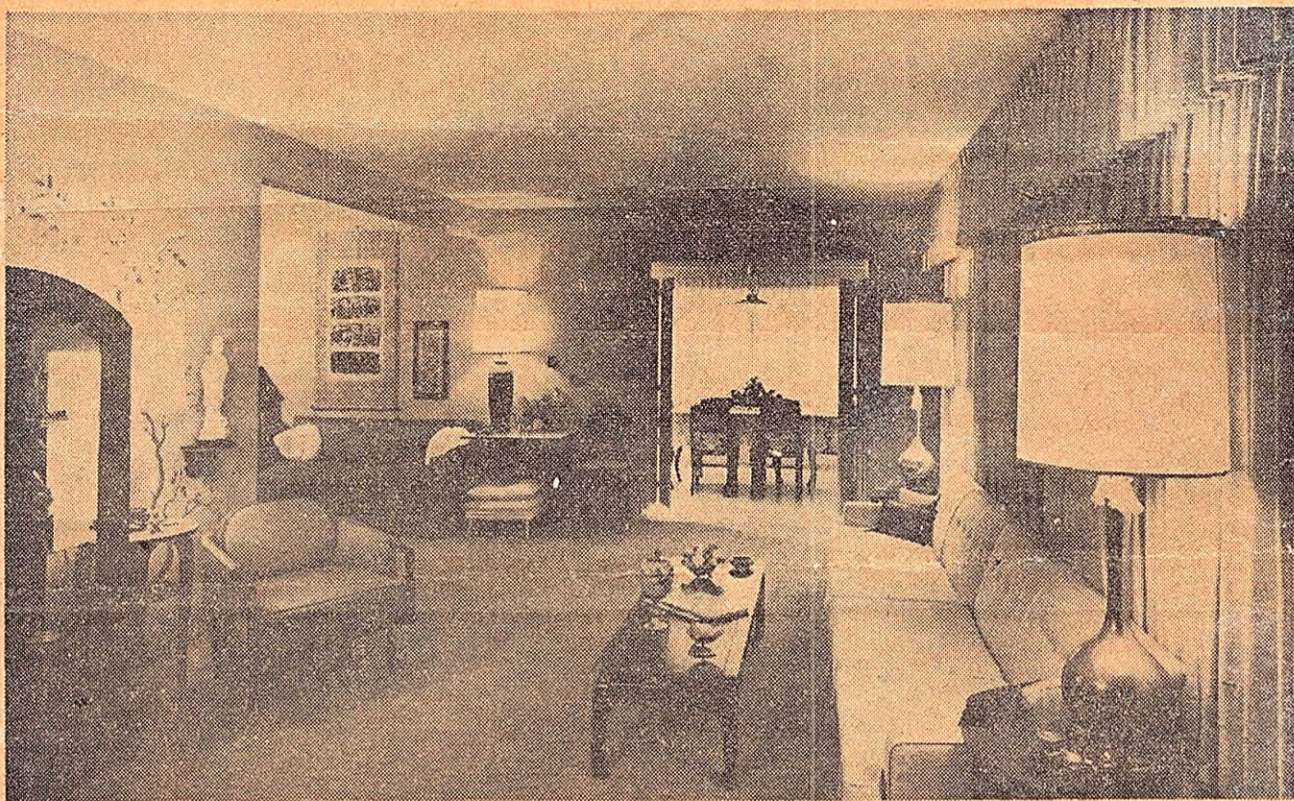
- A -new screen porch
- B -new utility room
- C -existing bedroom & bath
- D -new florida room
- E -new kitchen
- F -new dining area
- G -new car porte
- H -new terrace
- I -new bedroom
- J -new glassed porch





Mural adds deceptive depth to dining room wall.





EXPANDED LIVING AREA OF THE CORREIRA HOME

... includes area at left background, where kitchen was replaced by music, TV room. Center background is dining room which is part of new area with kitchen and utility room.

The Walls Have Eyes

(Continued From Page 1-F)

age which previously had been used as laundry area. They retained the larger trees in the front of the house, swinging the driveway around them, and added an ornamental block wall to an entrance patio for privacy without loss of ventilation.

With construction complete, they contacted Joseph Le Fer, St. Petersburg interior decorator, for ideas on how to furnish the living areas, using fine old Chinese pieces which had been left them by Mrs. Correira's parents.

Le Fer chose a color of antique parchment for the large sofa and draperies on the long window wall in the living room. Wall to wall carpeting is nutmeg, and woods are teak and walnut. Accent colors are turquoise, white, amethyst and gold.

Using the Correira's family pieces and adding custom built items as necessary, Le Fer has staged luxurious settings on all the walls of the living room.

His expert hand at executing murals and other decorative painting, was employed to create a mural in the living room as background for furniture, a large trompe l'oeil mural in the dining room and a translucent decoration of birds and vines on glass sliding doors in the master bedroom.

The main wall of the living room features a Chinese hand-carved teak curio cabinet against Le Fer's Chinoiserie mural of trees with all the leaves in sheets of 23 karat gold. The cabinet holds examples of Chinese craftsmanship including Ming blue Fu dogs and items of porcelain, soapstone and enamel on brass. The cabinet is flanked by tables designed by Le Fer, holding tall lamps made from wedding vases. Porcelain figurines on carved walnut wall brackets complete the grouping.

A grouping of a high back chair and a teak camphor chest with carved soapstone figures is basis for a setting on the entrance wall. Atop the chest is a copper and gold lamp on teak base. Hanging over it is a Chi-

The artistic illusion, which measures 10 feet wide by eight feet high, appears to be a French country house interior of the 1850's, showing the Arabesque influence of the decoration of the period.

The painting is achieved in clear, jewel-like tones, some of them almost pastel, with the shadows, supposedly cast by the objects, duplicating in color and shape the shadows cast in nature. The open window looks out onto a country scene with part of a castle in the background.

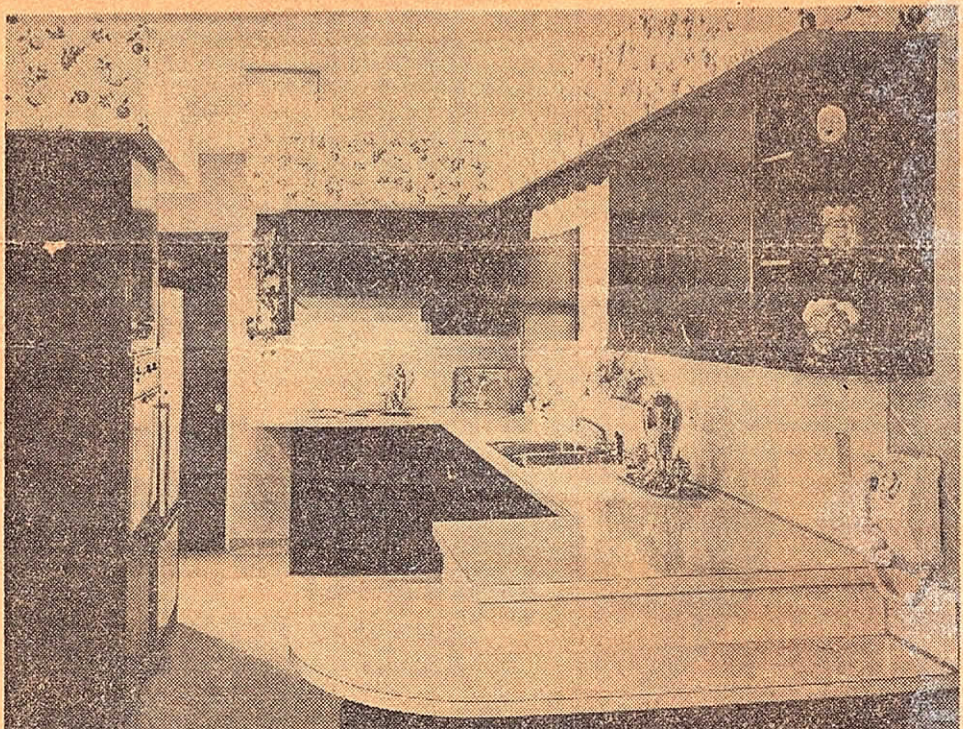
Another of Le Fer's "murals" also serves a decorative and functional purpose. The newly created master bedroom looks onto the front patio through sliding glass doors. Le Fer painted birds flitting above branches of trees on the panels. An interesting technique in this scene was the painting of one side of a bird on the inside of the glass and the opposite side on the outside of the panel, giving an effect of depth.

The Correiras certainly have achieved their goal in remodeling and gained a luxuriously furnished home with almost every corner a conversation piece.



LIVING ROOM ENTRANCE WALL

... features grouping of carved teak camphor chest and other items in an Oriental theme. High back chair is of oak and upholstery is green.



Wall to wall carpeting is nutmeg, and woods are teak and walnut. Accent colors are turquoise, white, amethyst and gold.

Using the Correira's family pieces and adding custom built items as necessary, Le Fer has staged luxurious settings on all the walls of the living room.

His expert hand at executing murals and other decorative painting, was employed to create a mural in the living room as background for furniture, a large trompe l'oeil mural in the dining room and a translucent decoration of birds and vines on glass sliding doors in the master bedroom.

The main wall of the living room features a Chinese hand-carved teak curio cabinet against Le Fer's Chinoiserie mural of trees with all the leaves in sheets of 23 karat gold. The cabinet holds examples of Chinese craftsmanship including Ming blue Fu dogs and items of porcelain, soapstone and enamel on brass. The cabinet is flanked by tables designed by Le Fer, holding tall lamps made from wedding vases. Porcelain figurines on carved walnut wall brackets complete the grouping.

A grouping of a high back chair and a teak camphor chest with carved soapstone figures is basis for a setting on the entrance wall. Atop the chest is a copper and gold lamp on teak base. Hanging over it is a Chinese scroll handpainted on silk over paper. Two hand-carved masks complete this group.

In the music area of the living room is featured a stereo-TV storage and display cabinet of walnut taking up almost one wall. The cabinetry was designed by Le Fer and made up by cabinet maker Edward A. Jeantet. The opposite wall has a hand-carved teak writing desk and companion chair. On the wall is a rare scroll with handprint made from a stone bas relief which dates back to 500 A.D.

Hidden from view from the living room is the mural on the dining room wall. It serves a double purpose. Containing a large mahogany table and six chairs, the room had little more space for furniture. The large blank wall seemed to close in even more on the confined area.

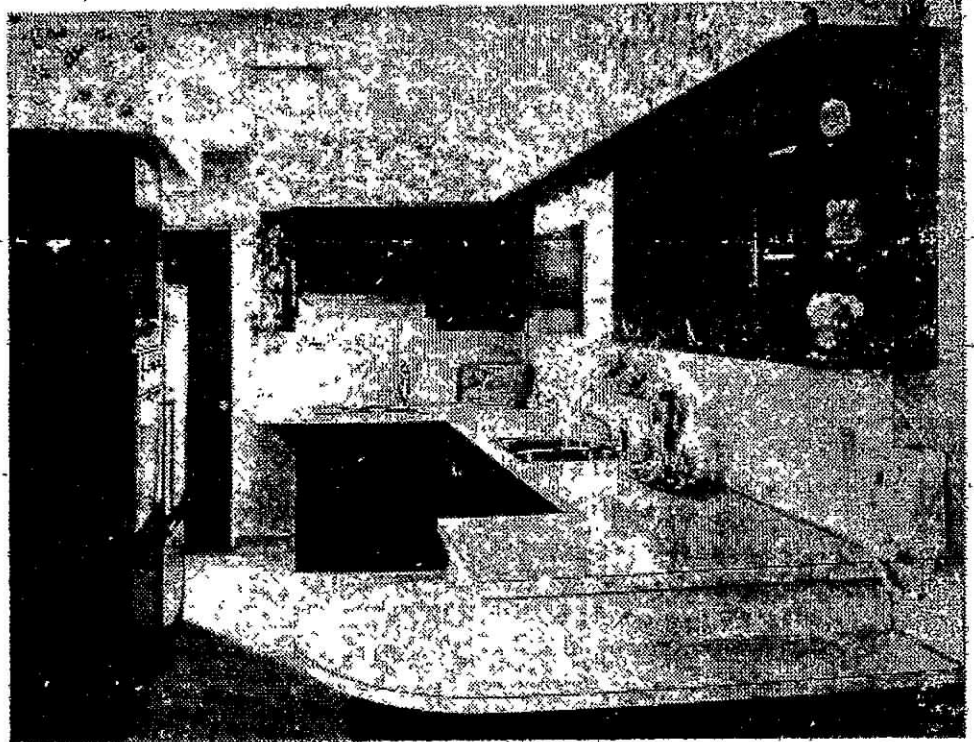
Le Fer decided to paint an open window on the wall so that the three-dimensional effect would visually open the room and the colors would add dramatic interest.

sliding glass doors. Le Fer painted birds flitting above branches of trees on the panels. An interesting technique in this scene was the painting of one side of a bird on the inside of the glass and the opposite side on the outside of the panel, giving an effect of depth.

The Correiras certainly have achieved their goal in remodeling and gained a luxuriously furnished home with almost every corner a conversation piece.

LIVING ROOM ENTRANCE WALL

... features grouping of carved teak camphor chest and other items in an Oriental theme. High back chair is of oak and upholstery is green.



CRISPLY EFFICIENT KITCHEN GAINS COLOR FROM RED-GRAINED

... finish of cabinets. Dining room is at foreground end of this area which originally was part of a built up patio.

